

**Cambridge Reactor Design**

Unit D2

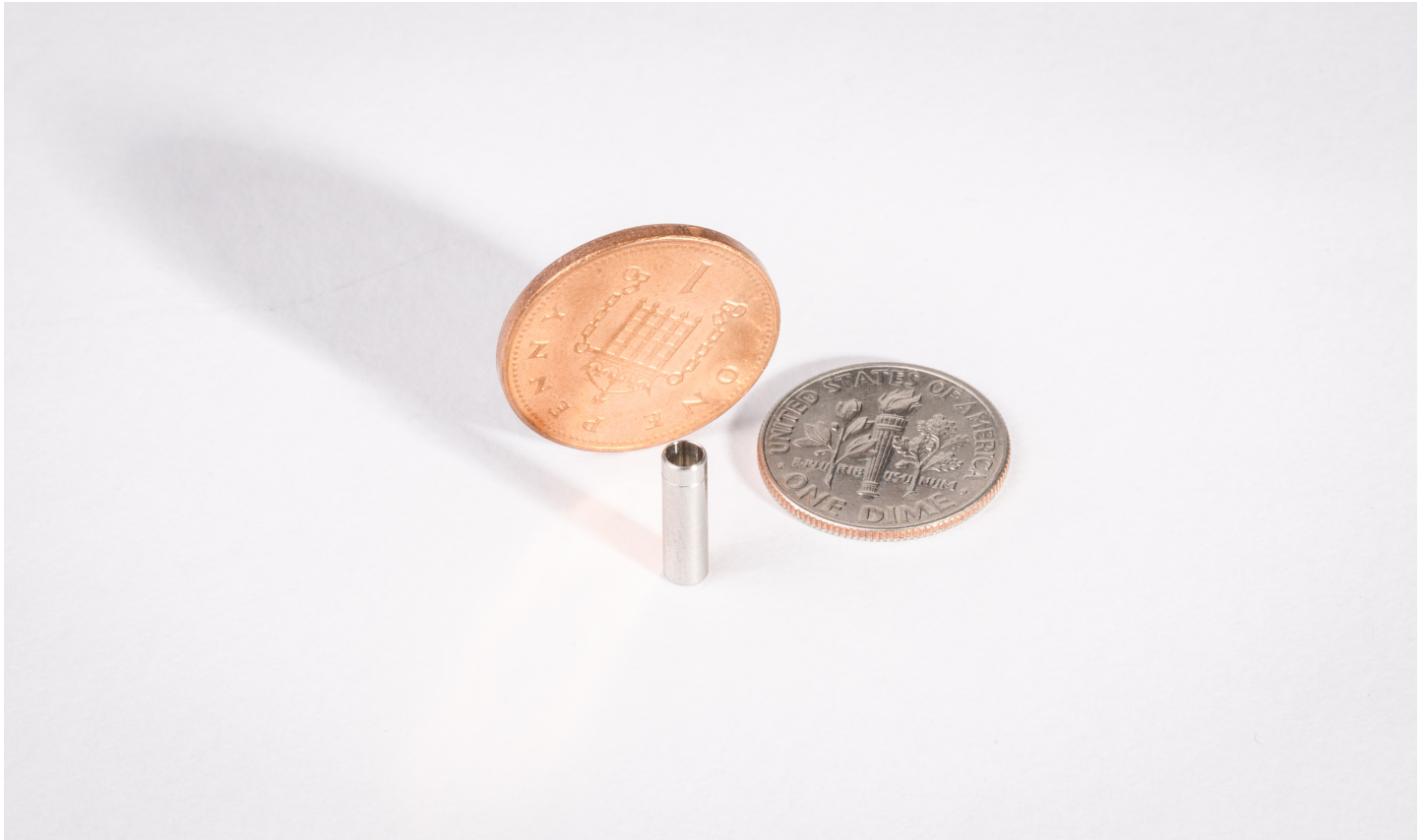
Brookfield Business Centre  
Twentyence Road, Cottenham  
Cambridge, CB24 8PS

T +44 (0) 1954 252522

F +44 (0) 1954 252566

E [sales@crduk.com](mailto:sales@crduk.com)

W [www.crduk.com](http://www.crduk.com)

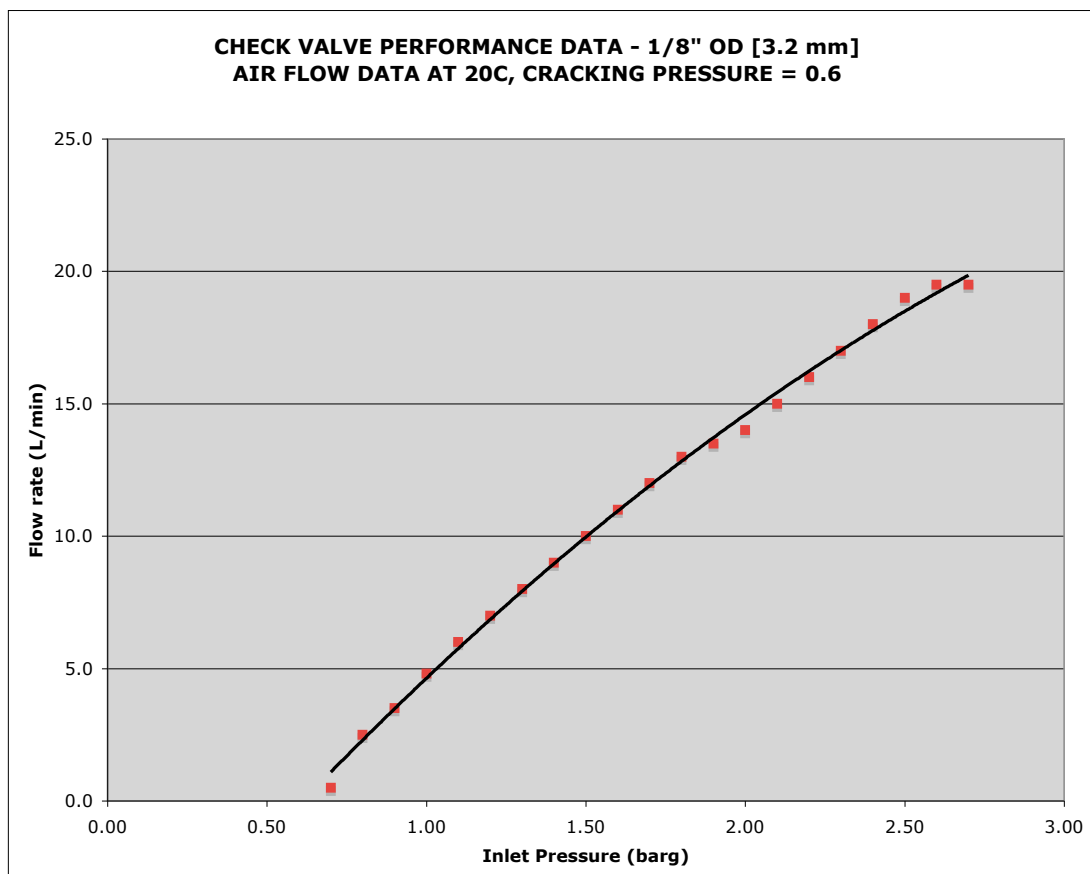


**PRODUCT**                      **1/8" CHECK VALVE**  
**PART NUMBER**              **11740**

Providing solutions globally in: • Batch and continuous chemistry • Downstream processing • Intelligent vision systems • Robot assistants • Bespoke engineering and automation

### Technical Information

Designation	Tube with non return valve
Construction form	1/8" OD, 11.0 mm long
Material	316 Stainless Steel
Pressure rating	30 bar
<b>Non-return valve</b>	
Nominal flow of air with the pressure drop across the valve of 1 barg	10L/min
Nominal flow of water with the pressure drop across the valve of 1 barg	0.4L/min
Cracking pressure	0.6 barg
Seal	FKM (Viton™)
Operating temperature range	-20C to 150C



**Cambridge Reactor Design**

Unit D2

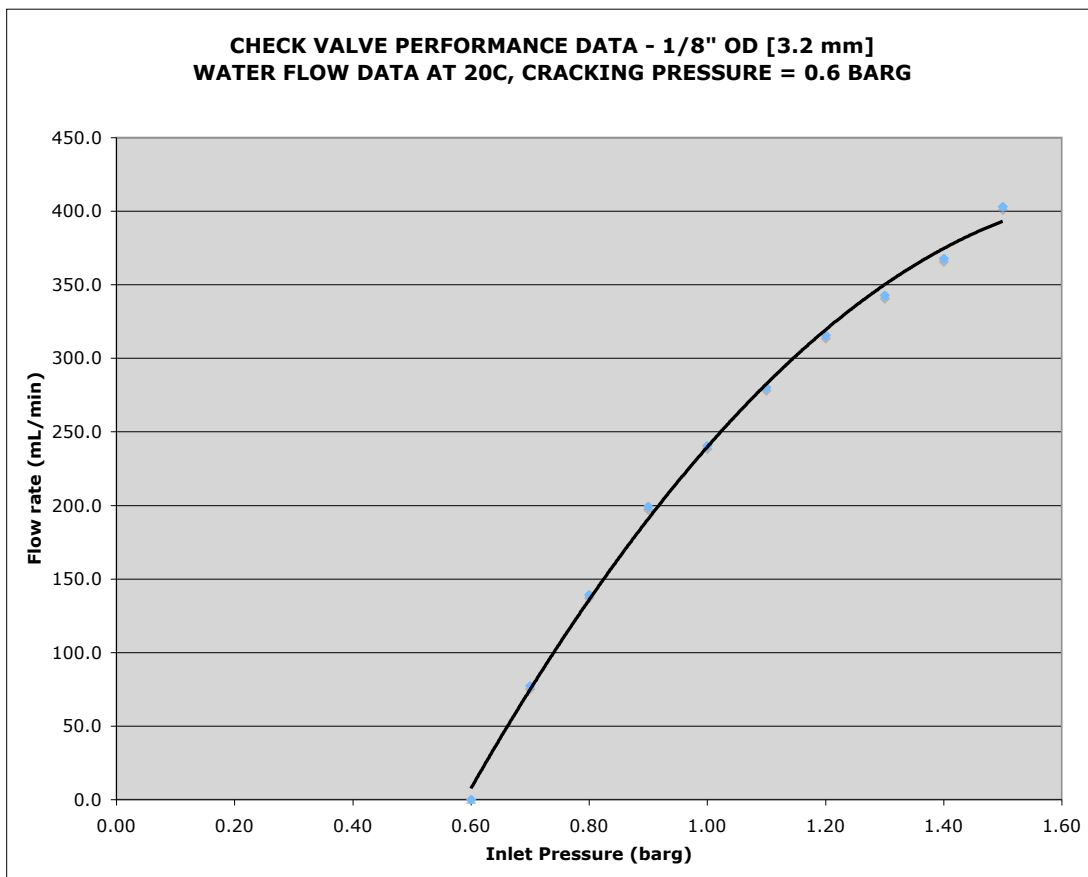
Brookfield Business Centre  
Twentyence Road, Cottenham  
Cambridge, CB24 8PS

T +44 (0) 1954 252522

F +44 (0) 1954 252566

E [sales@crduk.com](mailto:sales@crduk.com)

W [www.crduk.com](http://www.crduk.com)



Providing solutions globally in: • Batch and continuous chemistry • Downstream processing • Intelligent vision systems • Robot assistants • Bespoke engineering and automation

**Cambridge Reactor Design**

Unit D2

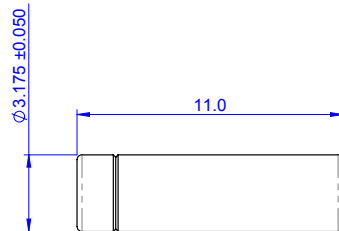
Brookfield Business Centre  
Twentyence Road, Cottenham  
Cambridge, CB24 8PS

T +44 (0) 1954 252522

F +44 (0) 1954 252566

E [sales@crduk.com](mailto:sales@crduk.com)

W [www.crduk.com](http://www.crduk.com)



Providing solutions globally in: • Batch and continuous chemistry • Downstream processing • Intelligent vision systems • Robot assistants • Bespoke engineering and automation